

CLX K5

4006



REDEFINING

DRONE EFFICIENCY

Specifications	
KV	380KV
Weight	59g
Motor dimension	44.5*20mm
Shaft Diameter	4mm
idle current	0.35A
Max Power	380W
internal resistance	190mOHM
Configuration	18N24P
Rated Voltage	4-6S
Peak current	16A

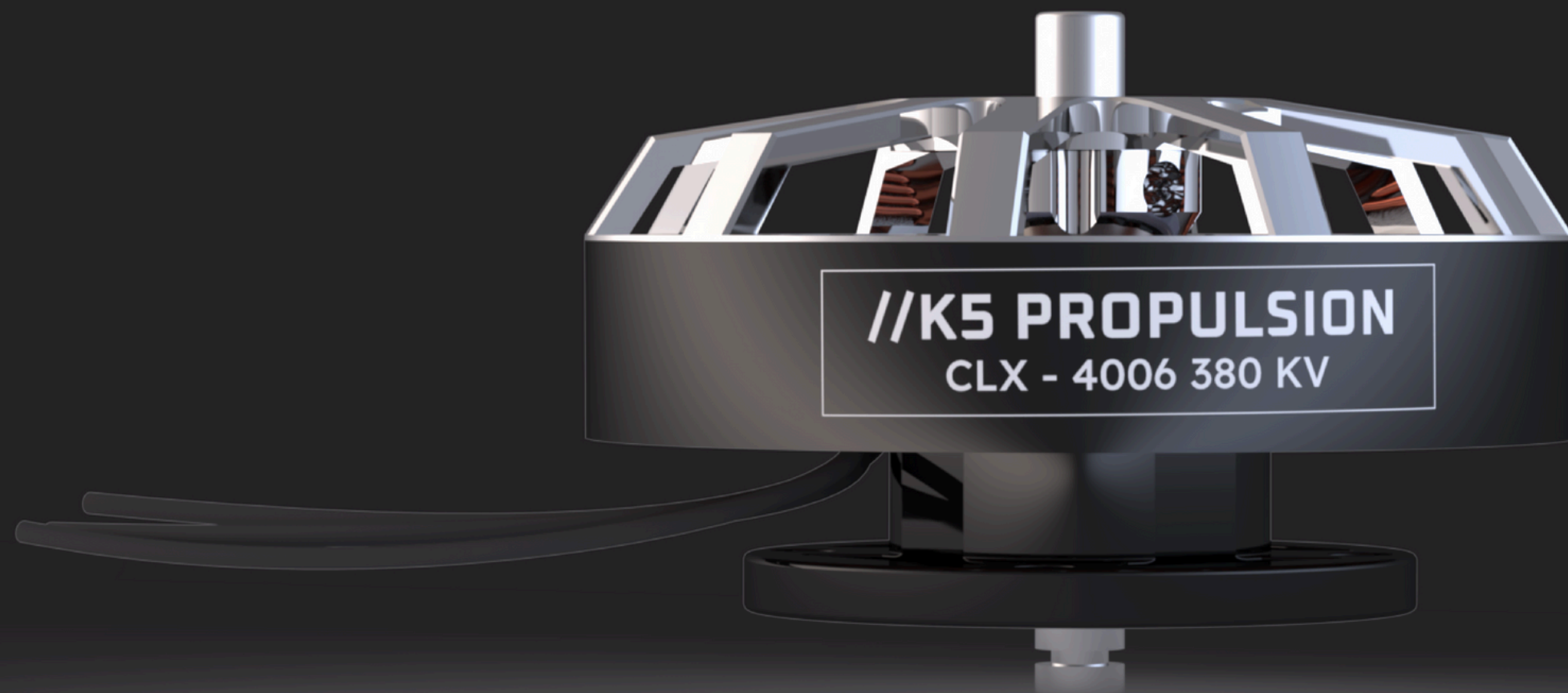
Unparalleled agility with a

FEATHER-LIGHT DESIGN

Innovative

OPEN BODY VENTILATION

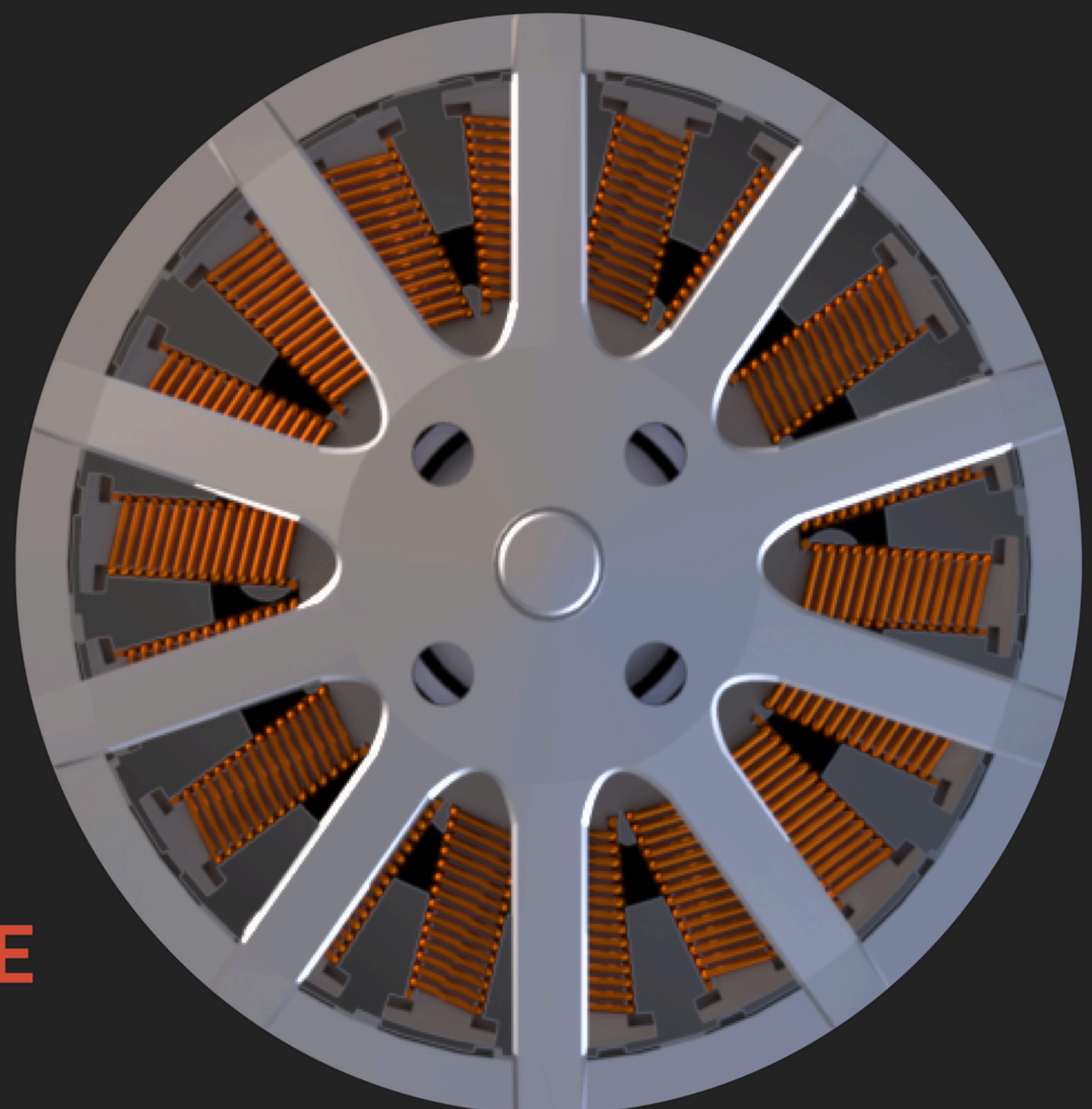
for consistent performance.



Delivers unprecedented
power and control in
every flight by pushing
limits with a

ROBUST THRUST CAPACITY 2 KG

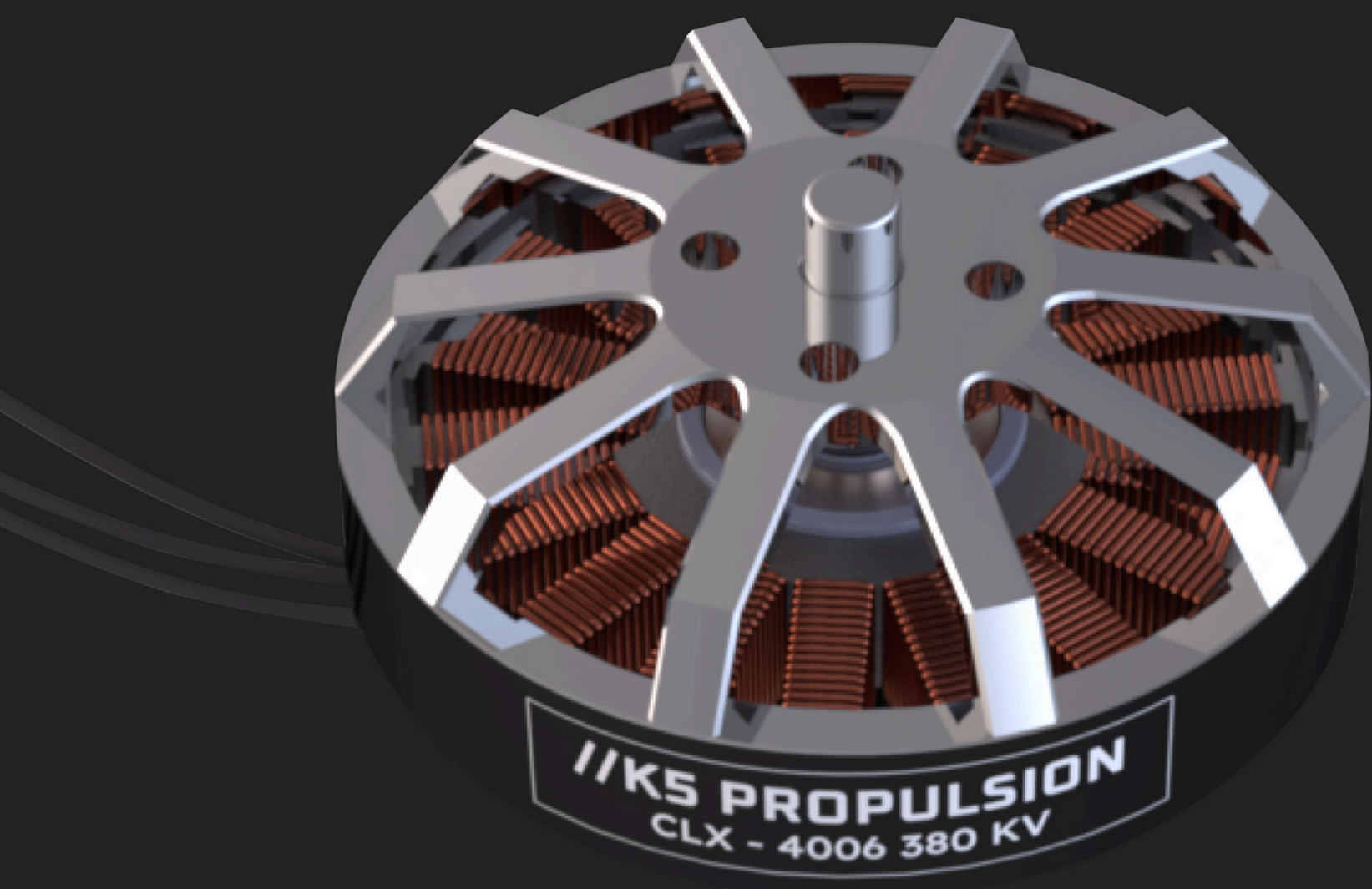
and beyond.



Crafted from

HIGH INDUSTRIAL GRADE MATERIAL

for unmatched strength.



Unlock peak performance with
an impressive

**11 G/W EFFICIENCY
RATING**

offering extended flight times and
optimized power consumption
for unparalleled endurance.

Voltage	Prop	Throttle	Current	Power	Thrust	Efficiency
6s(24v)	15" CF prop	50%	3.00	72.00	789	10.96
		55%	4.20	100.80	948	9.40
		60%	4.80	115.20	1033	8.97
		70%	8.10	194.40	1550	7.97
		80%	10.20	244.80	1822	7.44
		90%	12.30	295.20	1960	6.64
		100%	15.10	362.40	2210	6.10