

Product description

The wind speed sensor produced by our company is a high-reliability, high-performance wind speed sensor. This series of sensors can stably and accurately collect environmental wind speed signals, and are suitable for high-altitude operations, construction machinery, port machinery and other occasions.

The sensor has a built-in digital circuit with strong resistance to radio frequency, electromagnetic interference and lightning surge. The circuit of the wind speed sensor collects the electrical signal of the wind cup speed output that is linearly related to the ambient horizontal wind speed; the main structural parts of the product are made of alloy materials and surface treated. The product has good waterproof and anti-aging capabilities, and the internal and rotating parts are all sealed, which can effectively prevent the intrusion of water, salt spray and dust.



Features

- Developed based on the principle of non-contact magnetic sensing measurement;
- Built-in high-performance sensor, the collected data is high-precision and reliable;
- Wide wind speed measurement range, low starting wind speed;
- The wind speed sensor adopts a full metal shell, good corrosion resistance and strong wind resistance;
- The circuit protection adopts a fault-tolerant design, and the sensor will not be damaged in the case of wrong wiring;
- Comply with CE EMC standards, multi-level lightning protection and surge protection design;
- Can work in a wide voltage range of 12-30VDC.

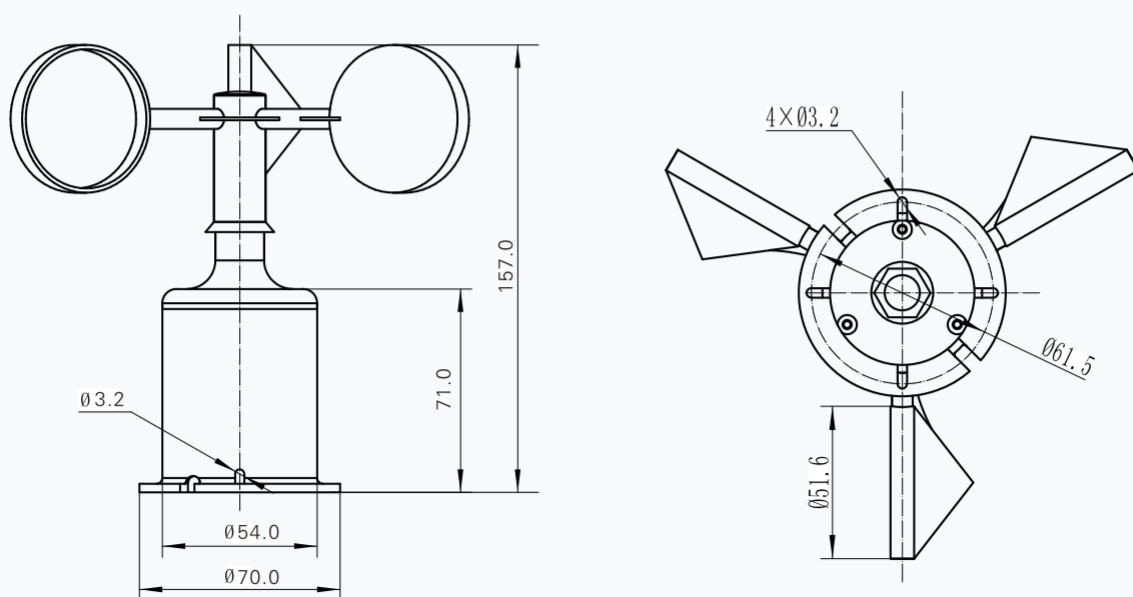
Applicable scene

- It is suitable for wind speed monitoring in factories, power plants, ports, mines, wind turbines, large-scale machinery and equipment, etc.

Performance

Working voltage	DC 12-30V
Starting wind speed	$\leq 0.5\text{m/s}$
Accuracy	$\pm 0.5\text{m/s} (< 5\text{m/s}); \pm 3\%\text{FS} (\geq 5\text{m/s})$
Working temperature	$-20^{\circ}\text{C} \sim +85^{\circ}\text{C}$
Working humidity	0%~95%(non-condensing)
Wind cup material	PC+Nylon
Measurement range	0~50m/s
Wind resistance	$> 70\text{m/s}$
Protection level	IP65
Static protection	15KV
Output signal	4~20mA, RS485, 0-5V, 0-10V

Dimensions



Selection guide

Examples of wind speed and direction sensor models: $\frac{FST200}{①} - \frac{1002}{②} \frac{111}{③④⑤} - \frac{50}{⑥}$

- ① Product series model ② Product model code ③ Output/power supply number ④ Electrical connection code
⑤ Extended function code ⑥ Units of measurement

FST200-	Company code + product series code								
	1002-	Product model code							
		1-	4-20mA 12-30VDC				Output/power		
		6-	RS485 output 12-30V						
			2-	Others				Electrical connections	
				1-	Standard type				Extended function module
					M-	Meters/second (m/s)			Units of measurement

Hunan Firstrate Sensor Co.,Ltd

A: Building 1, Zhiting Garden, Zhenhua Road, Intelligent
Manufacturing Industrial Park, Yuhua Economic Development
Zone, Changsha City, Hunan Province, China

T : +86-731-86171990

E : sales@firstratesensor.com

W : www.firstratesensor.com



WhatsApp



Wechat