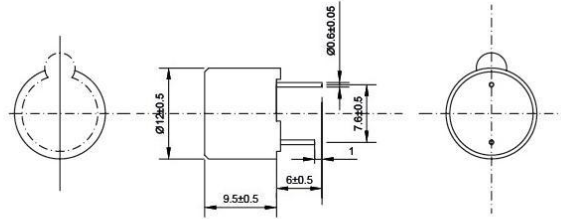


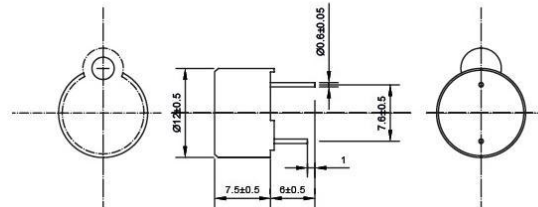
## 有源一体式系列

型号: TMB12A



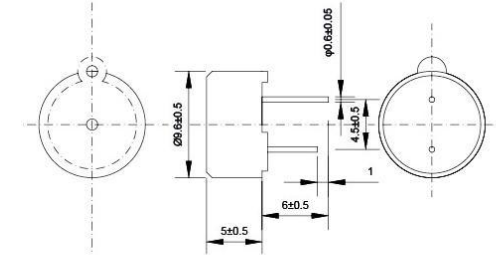
Type	TMB12A01	TMB12A03	TMB12A05	TMB12A12	TMB12A24
Rated Voltage(V)	1.5	3	5	12	24
Voltage Range(V)	1.2 ~ 2.5	2 ~ 4	4 ~ 8	8 ~ 15	15 ~ 30
Rated Current(mA)	≤ 20	≤ 35	≤ 30	≤ 25	≤ 27
Sound Output(db)	≥ 82	≥ 85	≥ 85	≥ 85	≥ 85
Resonant Freq(Hz)	2400 ± 300	2400 ± 300	2400 ± 300	2400 ± 300	2400 ± 300
Operating Temp(°C)	-20 ~ +70	-20 ~ +70	-20 ~ +70	-20 ~ +70	-20 ~ +70
Storage Temp(°C)	-30 ~ +80	-30 ~ +80	-30 ~ +80	-30 ~ +80	-30 ~ +80
Weight(g)	2	2	2	2	2

型号: TMB12D



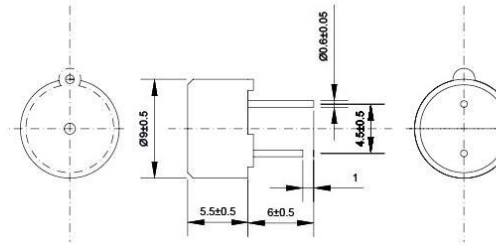
Type	TMB12D01	TMB12D03	TMB12D05	TMB12D12
Rated Voltage(V)	1.5	3	5	12
Voltage Range(V)	1.2 ~ 2	2 ~ 4	4 ~ 8	8 ~ 15
Rated Current(mA)	≤ 20	≤ 35	≤ 30	≤ 25
Sound Output(db)	≥ 80	≥ 85	≥ 85	≥ 85
Resonant Freq(Hz)	2800 ± 300	2800 ± 300	2800 ± 300	2800 ± 300
Operating Temp(°C)	-20 ~ +70	-20 ~ +70	-20 ~ +70	-20 ~ +70
Storage Temp(°C)	-30 ~ +80	-30 ~ +80	-30 ~ +80	-30 ~ +80
Weight(g)	2	2	2	2

型号: TMB9650



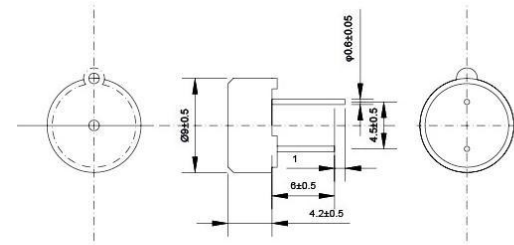
Type	TMB9650-03	TMB9650-05	TMB9650-12
Rated Voltage(V)	3	5	12
Voltage Range(V)	2 ~ 4	4 ~ 8	8 ~ 15
Rated Current(mA)	≤ 35	≤ 30	≤ 30
Sound Output(db)	≥ 80	≥ 83	≥ 83
Resonant Freq(Hz)	2600 ± 500	2600 ± 500	2600 ± 500
Operating Temp(°C)	-20 ~ +70	-20 ~ +70	-20 ~ +70
Storage Temp(°C)	-30 ~ +80	-30 ~ +80	-30 ~ +80
Weight(g)		1	

型号: TMB0955



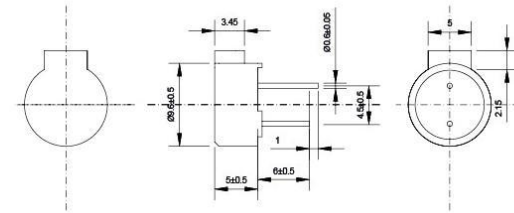
Type	TMB0955-03	TMB0955-05	TMB0955-12
Rated Voltage(V)	3	5	12
Voltage Range(V)	2 ~ 4	4 ~ 8	8 ~ 15
Rated Current(mA)	≤ 35	≤ 30	≤ 30
Sound Output(db)	≥ 80	≥ 83	≥ 83
Resonant Freq(Hz)	2600 ± 500	2600 ± 500	2600 ± 500
Operating Temp(°C)	-20 ~ +60	-20 ~ +60	-20 ~ +60
Storage Temp(°C)	-30 ~ +70	-30 ~ +70	-30 ~ +70
Weight(g)	1	1	1

型号: TMB0942



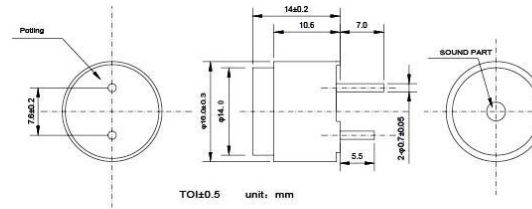
Type	TMB0942-03	TMB0942-05	TMB0942-12
Rated Voltage(V)	3	5	12
Voltage Range(V)	2 ~ 4	4 ~ 8	8 ~ 15
Rated Current(mA)	≦ 35	≦ 30	≦ 30
Sound Output(db)	≧ 80	≧ 83	≧ 83
Resonant Freq(Hz)	2600 ± 500	2600 ± 500	2600 ± 500
Operating Temp(°C)	-20 ~ +60	-20 ~ +60	-20 ~ +60
Storage Temp(°C)	-30 ~ +70	-30 ~ +70	-30 ~ +70
Weight(g)	1	1	1

型号: TMB9650C



Type	TMB9650C-03	TMB9650C-05	TMB9650C-12
Rated Voltage(V)	3	5	12
Voltage Range(V)	2 ~ 4	4 ~ 8	8 ~ 15
Rated Current(mA)	≦ 30	≦ 30	≦ 30
Sound Output(db)	≧ 80	≧ 83	≧ 83
Resonant Freq(Hz)	2600 ± 500	2600 ± 500	2600 ± 500
Operating Temp(°C)	-20 ~ +60	-20 ~ +60	-20 ~ +60
Storage Temp(°C)	-30 ~ +70	-30 ~ +70	-30 ~ +70
Weight(g)	1	1	1

型号: TMB1614

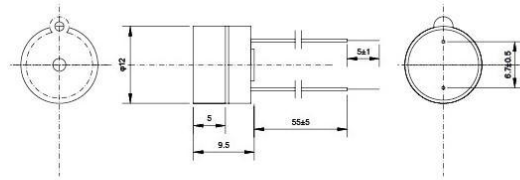


Type	TMB1614-05	TMB1614-12
Rated Voltage(V)	5	12
Voltage Range(V)	4 ~ 7	8 ~ 15
Rated Current(mA)	≦ 30	≦ 30
Sound Output(db)	≧ 85	≧ 85
Resonant Freq(Hz)	2300 ± 300	2300 ± 300
Operating Temp(°C)	-20 ~ +70	-20 ~ +70
Storage Temp(°C)	-30 ~ +80	-30 ~ +80
Weight(g)	7	7



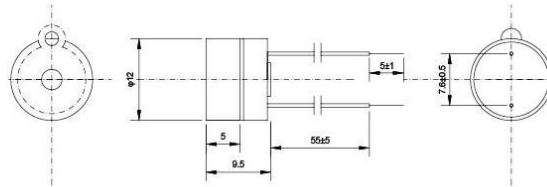
## 有源分体式系列

型号: YMD12095-G



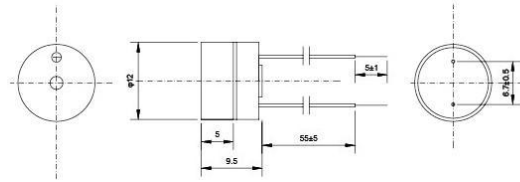
Type	YMD 12095G-1.5V	YMD 12095G-3V	YMD 12095G-5V	YMD 12095G-9V	YMD 12095G-12V	YMD 12095G-24V
Rated Voltage(V)	1.5	3	5	9	12	24V
Voltage Range(V)	1.2 ~ 2.5	2 ~ 4	4 ~ 8	8 ~ 10	9 ~ 13	14~28
Rated Current(mA)	≤ 20	≤ 35	≤ 30	≤ 25	≤ 30	≤ 30
Sound Output(db)	≥ 82	≥ 85	≥ 85	≥ 85	≥ 85	≥ 85
Resonant Freq(Hz)	2300 ± 500	2300 ± 500	2300 ± 500	2300 ± 500	2300 ± 500	2300 ± 500
Operating Temp(°C)	-20 ~ +45	-20 ~ +45	-20 ~ +45	-20 ~ +45	-20 ~ +45	-20 ~ +45
Storage Temp(°C)	-20 ~ +60	-20 ~ +60	-20 ~ +60	-20 ~ +60	-20 ~ +60	-20 ~ +60
Weight(g)	2	2	2	2	2	2

型号: YMD12095-GZ



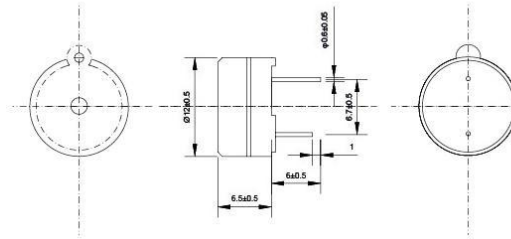
Type	YMD12095GZ-1.5V	YMD12095GZ-3V	YMD12095GZ-5V	YMD12095GZ-12V
Rated Voltage(V)	1.5	3	5	12
Voltage Range(V)	1.2 ~ 2.5	2 ~ 4	4 ~ 8	9 ~ 13
Rated Current(mA)	≤ 20	≤ 35	≤ 30	≤ 30
Sound Output(db)	≥ 82	≥ 85	≥ 85	≥ 85
Resonant Freq(Hz)	2300 ± 500	2300 ± 500	2300 ± 500	2300 ± 500
Operating Temp(°C)	-20 ~ +45	-20 ~ +45	-20 ~ +45	-20 ~ +45
Storage Temp(°C)	-20 ~ +60	-20 ~ +60	-20 ~ +60	-20 ~ +60
Weight(g)	2	2	2	2

型号: YMD12095-GBX



Type	YMD 12095GBX-12V	YMD 12095GBX-24V	YMD 12095GBX-36V	YMD 12095GBX-48V
Rated Voltage(V)	12	24	36	48
Voltage Range(V)	9 ~ 15	15 ~ 28	28 ~ 38	38 ~ 50
Rated Current(mA)	≤ 90	≤ 95	≤ 95	≤ 95
Sound Output(db)	≥ 85	≥ 85	≥ 85	≥ 85
Resonant Freq(Hz)	2300 ± 200	2300 ± 200	2300 ± 200	2300 ± 200
Operating Temp(°C)	-20 ~ +45	-20 ~ +45	-20 ~ +45	-20 ~ +45
Storage Temp(°C)	-20 ~ +60	-20 ~ +60	-20 ~ +60	-20 ~ +60
Weight(g)	2	2	2	2

型号: YMD12065-G

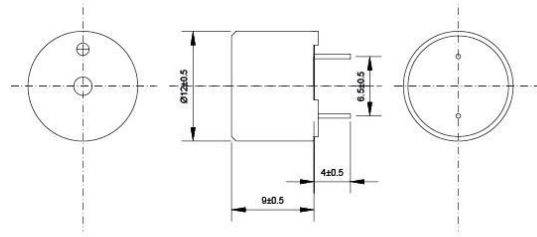


Type	YMD 12065G-1.5V	YMD 12065G-3V	YMD 12065G-5V	YMD 12065G-9V	YMD 12065G-12V
Rated Voltage(V)	1.5	3	5	9	12
Voltage Range(V)	1.2 ~ 2.5	2 ~ 4	4 ~ 8	8 ~ 11	10 ~ 13
Rated Current(mA)	≤ 20	≤ 35	≤ 30	≤ 25	≤ 30
Sound Output(db)	≥ 82	≥ 85	≥ 85	≥ 85	≥ 85
Resonant Freq(Hz)	2300 ± 500	2300 ± 500	2300 ± 500	2300 ± 500	2300 ± 500
Operating Temp(°C)	-20 ~ +45	-20 ~ +45	-20 ~ +45	-20 ~ +45	-20 ~ +45
Storage Temp(°C)	-20 ~ +60	-20 ~ +60	-20 ~ +60	-20 ~ +60	-20 ~ +60
Weight(g)	2	2	2	2	2



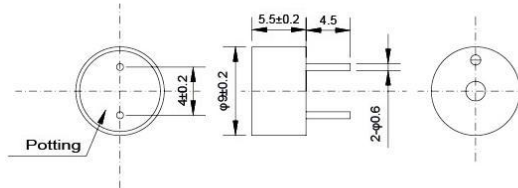
## 无源一体式系列

型号: TMB12C



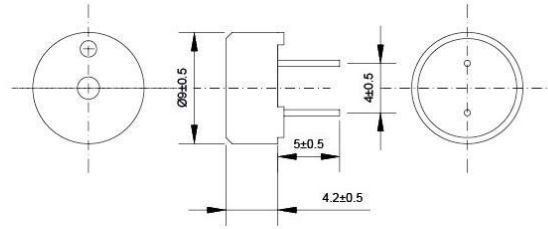
Type	TMB12C01	TMB12C05	TMB12C12
Rated Voltage(V)	1.5	5	12
Voltage Range(V)	1 ~ 2	3 ~ 8	8 ~ 15
Rated Current(mA)	≤ 70	≤ 30	≤ 30
Coil Resistance(Ω)	16±2	42±3	120±6
Sound Output(db)	≥ 85	≥ 85	≥ 85
Resonant Freq(Hz)	2731	2400	2400
Operating Temp(°C)	-20 ~ +70	-20 ~ +70	-20 ~ +70
Storage Temp(°C)	-30 ~ +80	-30 ~ +80	-30 ~ +80
Weight(g)	1	1	1

型号: HC9055



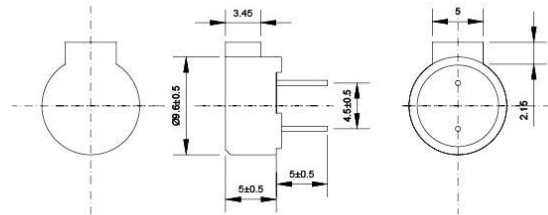
Type	HC9055	HC9055	HC9055
Rated Voltage(V)	1.5	3	5
Voltage Range(V)	1 ~ 2	2 ~ 4	2.5 ~ 6
Rated Current(mA)	≤ 70	≤ 55	≤ 35
Coil Resistance(Ω)	5.5±1	16±2	42±3
Sound Output(db)	≥ 85	≥ 85	≥ 85
Resonant Freq(Hz)	2731	2731	2731
Operating Temp(°C)	-20 ~ +70	-20 ~ +70	-20 ~ +70
Storage Temp(°C)	-30 ~ +80	-30 ~ +80	-30 ~ +80
Weight(g)	1	1	1

型号: HC0942



Type	HC0942-01	HC0942-03	HC0942-05
Rated Voltage(V)	1.5	3	5
Voltage Range(V)	1 ~ 2	2 ~ 4	2.5 ~ 6
Rated Current(mA)	≤ 70	≤ 55	≤ 35
Coil Resistance(Ω)	5.5 ± 1	16 ± 2	42 ± 3
Sound Output(db)	≥ 85	≥ 85	≥ 85
Resonant Freq(Hz)	2731	2731	2731
Operating Temp(°C)	-20 ~ +70	-20 ~ +70	-20 ~ +70
Storage Temp(°C)	-30 ~ +80	-30 ~ +80	-30 ~ +80
Weight(g)	1	1	1

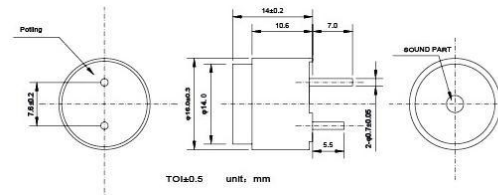
型号: HC9650C



Type	HC9650C-01	HC9650C-03	HC9650C-05
Rated Voltage(V)	1.5	3	5
Voltage Range(V)	1 ~ 2	2 ~ 4	2.5 ~ 6
Rated Current(mA)	≤ 70	≤ 55	≤ 35
Coil Resistance(Ω)	5.5 ± 1	28 ± 2	42 ± 3
Sound Output(db)	≥ 85	≥ 85	≥ 85
Resonant Freq(Hz)	2731	2731	2731
Operating Temp(°C)	-20 ~ +70	-20 ~ +70	-20 ~ +70
Storage Temp(°C)	-30 ~ +80	-30 ~ +80	-30 ~ +80
Weight(g)	1	1	1



型号: HC1614

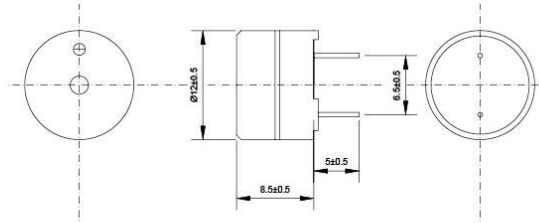


Type	HC1614-05	HC1614-12
Rated Voltage(V)	6	12
Voltage Range(V)	4 ~ 8	9 ~ 15
Rated Current(mA)	≤ 40	≤ 40
Coil Resistance(Ω)	50 ± 5	120 ± 12
Sound Output(db)	≥ 85	≥ 85
Resonant Freq(Hz)	2048	2048
Operating Temp(°C)	-20 ~ +70	-20 ~ +70
Storage Temp(°C)	-30 ~ +80	-30 ~ +80
Weight(g)	5	5



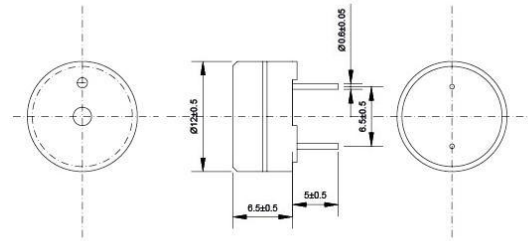
## 无源分体式系列

型号: HC12085



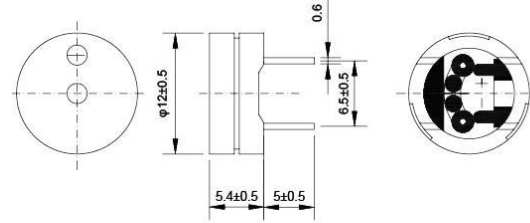
Type	HC12085-16	HC12085-42	HC12085-60
Rated Voltage(V)	1.5	3	5
Voltage Range(V)	1 ~ 3	3 ~ 6	3 ~ 8
Rated Current(mA)	≤ 30	≤ 25	≤ 35
Coil Resistance(Ω)	16 ± 2	42 ± 3	60 ± 5
Sound Output(db)	≥ 85	≥ 85	≥ 85
Resonant Freq(Hz)	2048	2048	2048
Operating Temp(°C)	-20 ~ +45	-20 ~ +45	-20 ~ +45
Storage Temp(°C)	-30 ~ +60	-30 ~ +60	-30 ~ +60
Weight(g)	2	2	2

型号: HC12065



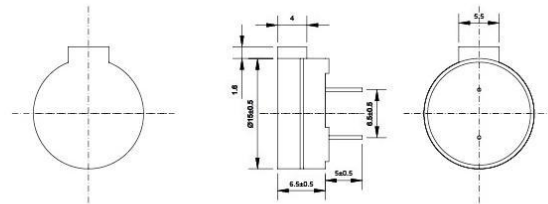
Type	HC12065-16	HC12065-42	HC12065-60
Rated Voltage(V)	1.5	3	5
Voltage Range(V)	1 ~ 3	3 ~ 6	3 ~ 8
Rated Current(mA)	≤ 30	≤ 25	≤ 35
Coil Resistance(Ω)	16 ± 2	42 ± 3	60 ± 5
Sound Output(db)	≥ 85	≥ 85	≥ 85
Resonant Freq(Hz)	2048	2048	2048
Operating Temp(°C)	-20 ~ +45	-20 ~ +45	-20 ~ +45
Storage Temp(°C)	-30 ~ +60	-30 ~ +60	-30 ~ +60
Weight(g)	1.5	1.5	1.5

型号: HC12054



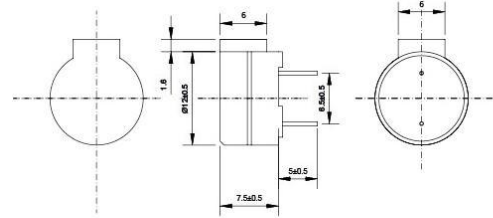
Type	HC12054-16	HC12054-42	HC12054-60
Rated Voltage(V)	1.5	3	5
Voltage Range(V)	1 ~ 3	3 ~ 6	3 ~ 8
Rated Current(mA)	≤ 30	≤ 25	≤ 35
Coil Resistance(Ω)	16 ± 2	42 ± 3	60 ± 5
Sound Output(db)	≥ 85	≥ 85	≥ 85
Resonant Freq(Hz)	2048	2048	2048
Operating Temp(°C)	-20 ~ +45	-20 ~ +45	-20 ~ +45
Storage Temp(°C)	-30 ~ +60	-30 ~ +60	-30 ~ +60
Weight(g)	1.5	1.5	1.5

型号: HC12065C



Type	HC12065C-16	HC12065C-42
Rated Voltage(V)	1.5	3
Voltage Range(V)	1 ~ 3	3 ~ 6
Rated Current(mA)	≤ 30	≤ 25
Coil Resistance(Ω)	16 ± 2	42 ± 3
Sound Output(db)	≥ 85	≥ 85
Resonant Freq(Hz)	2731	2731
Operating Temp(°C)	-20 ~ +70	-20 ~ +70
Storage Temp(°C)	-30 ~ +80	-30 ~ +80
Weight(g)	2	2

型号: HC12075C

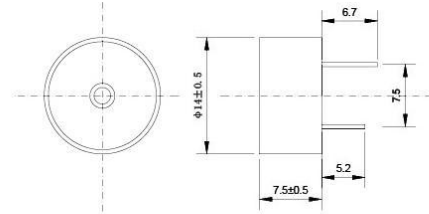


Type	HC12075C-16	HC12075C-42
Rated Voltage(V)	1.5	3
Voltage Range(V)	1 ~ 3	3 ~ 6
Rated Current(mA)	≤ 30	≤ 25
Coil Resistance(Ω)	16 ± 2	42 ± 3
Sound Output(db)	≥ 85	≥ 85
Resonant Freq(Hz)	2731	2731
Operating Temp(°C)	-20 ~ +70	-20 ~ +70
Storage Temp(°C)	-30 ~ +80	-30 ~ +80
Weight(g)	2	2



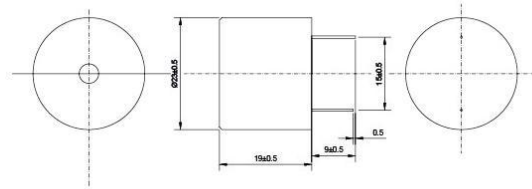
## 有源压电式系列

型号: SFM14-I



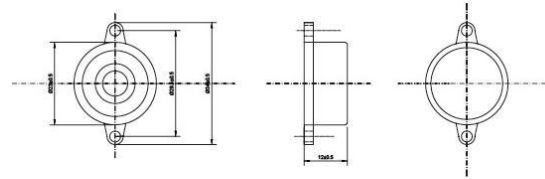
Type	SFM14-I
Rated Voltage(V)	12
Voltage Range(V)	3 ~ 16
Rated Current(mA)	≤ 10
Sound Output(db)	≥ 80
Resonant Freq(Hz)	4500 ± 500
Operating Temp(°C)	-20 ~ +60
Storage Temp(°C)	-30 ~ +70
Weight(g)	2

型号: SFM20-A



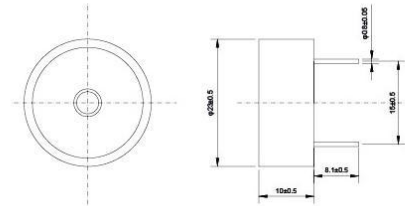
Type	SFM20-A
Rated Voltage(V)	12
Voltage Range(V)	3 ~ 24
Rated Current(mA)	≤ 20
Sound Output(db)	≥ 90
Resonant Freq(Hz)	3000 ± 500
Operating Temp(°C)	-20 ~ +45
Storage Temp(°C)	-30 ~ +60
Weight(g)	5.5

型号: SFM20-B



Type	SFM20-B
Rated Voltage(V)	12
Voltage Range(V)	3 ~ 24
Rated Current(mA)	≦ 12
Sound Output(db)	≧ 90
Resonant Freq(Hz)	3000 ± 500
Operating Temp(°C)	-20 ~ +45
Storage Temp(°C)	-30 ~ +60
Weight(g)	5.5

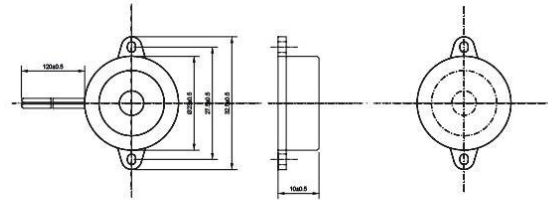
型号: SFM20-C



Type	SFM20-C
Rated Voltage(V)	12
Voltage Range(V)	3 ~ 24
Rated Current(mA)	≦ 10
Sound Output(db)	≧ 90
Resonant Freq(Hz)	3000 ± 500
Operating Temp(°C)	-20 ~ +45
Storage Temp(°C)	-30 ~ +60
Weight(g)	3.5

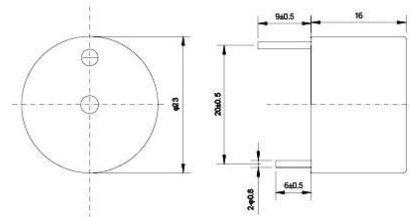


型号: SFM20-CI



Type	SFM20-CI
Rated Voltage(V)	12
Voltage Range(V)	3 ~ 24
Rated Current(mA)	≤ 10
Sound Output(db)	≥ 90
Resonant Freq(Hz)	3800 ± 500
Operating Temp(°C)	-20 ~ +45
Storage Temp(°C)	-30 ~ +60
Weight(g)	3

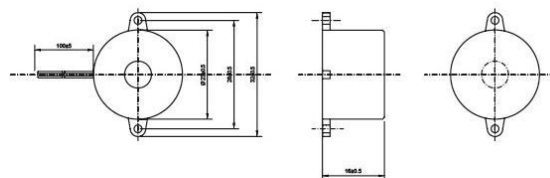
型号: SFM20-D



Type	SFM20-D
Rated Voltage(V)	12
Voltage Range(V)	3 ~ 24
Rated Current(mA)	≤ 10
Sound Output(db)	≥ 90
Resonant Freq(Hz)	3500 ± 500
Operating Temp(°C)	-20 ~ +45
Storage Temp(°C)	-30 ~ +60
Weight(g)	5



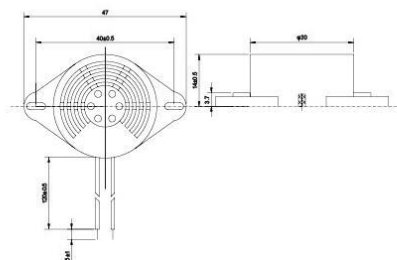
型号: SFM20-DI



Type	SFM20-DI
Rated Voltage(V)	12
Voltage Range(V)	3 ~ 24
Rated Current(mA)	≦ 10
Sound Output(db)	≧ 95
Resonant Freq(Hz)	3000 ± 500
Operating Temp(°C)	-20 ~ +45
Storage Temp(°C)	-30 ~ +60
Weight(g)	3.5



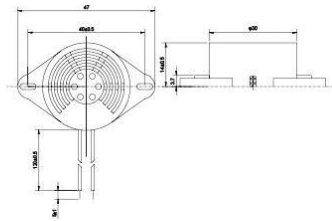
型号: SFM27-I



Type	SFM27-I
Rated Voltage(V)	12
Voltage Range(V)	3 ~ 24
Rated Current(mA)	≦ 12
Sound Output(db)	≧ 95
Resonant Freq(Hz)	3000 ± 500
Operating Temp(°C)	-20 ~ +60
Storage Temp(°C)	-30 ~ +70
Weight(g)	7



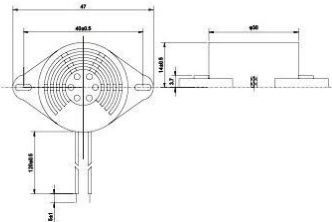
型号: SFM27-II



Type	SFM27-II
Rated Voltage(V)	12
Voltage Range(V)	3 ~ 24
Rated Current(mA)	≤ 30
Sound Output(db)	≥ 90
Resonant Freq(Hz)	3000 ± 500
Operating Temp(°C)	-20 ~ +60
Storage Temp(°C)	-30 ~ +70
Weight(g)	7



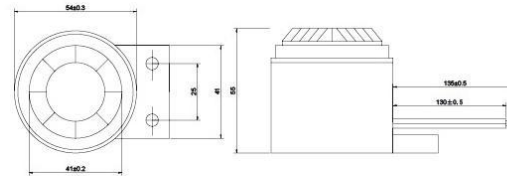
型号: SFM27-III



Type	SFM27-III
Rated Voltage(V)	220
Voltage Range(V)	200 ~ 240
Rated Current(mA)	≥ 85
Sound Output(db)	2300 ± 500
Resonant Freq(Hz)	-20 ~ +45
Operating Temp(°C)	-30 ~ +60
Storage Temp(°C)	7
Weight(g)	7

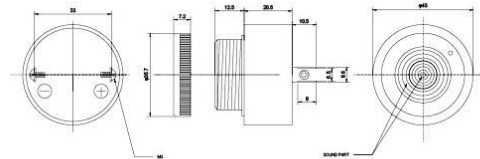


型号: SFB55-I



Type	SFB55-I
Rated Voltage(V)	12
Voltage Range(V)	6 ~ 16
Rated Current(mA)	≤ 350
Sound Output(db)	≥ 110
Resonant Freq(Hz)	3000 ± 500
Operating Temp(°C)	-20 ~ +40
Storage Temp(°C)	-30 ~ +60
Weight(g)	80

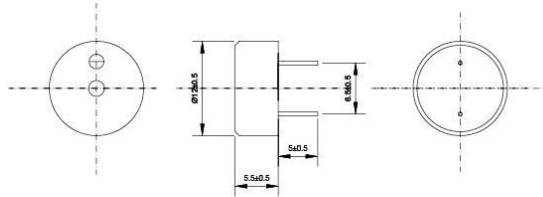
型号: SFM380



Type	SFM380
Rated Voltage(V)	12
Voltage Range(V)	5 ~ 15
Rated Current(mA)	≤ 80
Sound Output(db)	≥ 90
Resonant Freq(Hz)	2800 ± 500
Operating Temp(°C)	-20 ~ +60
Storage Temp(°C)	-30 ~ +70
Weight(g)	40

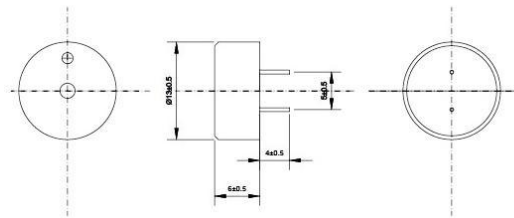
## 无源压电式系列

型号: AC1255



Type	AC1255
Sound Pressure level(db)	≥ 80 at 4.0KHz/5Vp-p 1/2duty Square Wave/10cm
Capacitance(pF)	10000 ± 30 % at 120HZ
Rated Voltage(V)	1 ~ 25
Operating Temp(°C)	-20 ~ +70
Storage Temp(°C)	-30 ~ +80
Weight(g)	2
Weight(g)	2

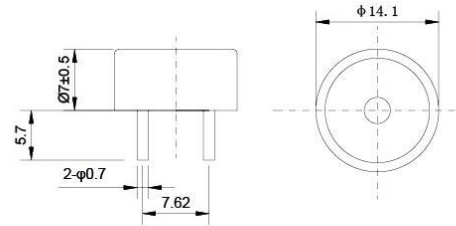
型号: AC1360



Type	AC1360
Sound Pressure level(db)	≥ 75 at 4.0KHz/5Vp-p 1/2duty Square Wave/10cm
Capacitance(pF)	10000 ± 30 % at 120HZ
Rated Voltage(V)	1 ~ 25
Operating Temp(°C)	-20 ~ +70
Storage Temp(°C)	-30 ~ +80
Weight(g)	2
Weight(g)	2

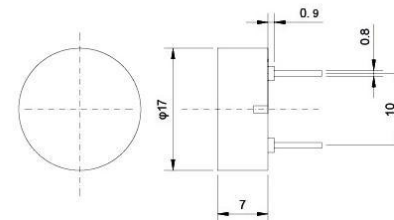


型号: AC1470



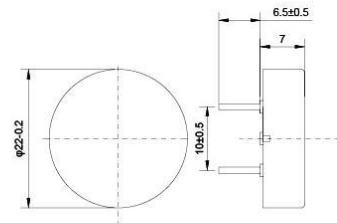
Type	AC1470
Sound Pressure level(db)	≥ 85 at4.0KHz/5Vp-p 1/2duty Square Wave/10cm
Capacitance(pF)	12000 ± 30 % at120HZ
Rated Voltage(V)	1 ~ 25
Operating Temp(°C)	-20 ~ +70
Storage Temp(°C)	-30 ~ +80
Weight(g)	2
Weight(g)	2

型号: AC1770C



Type	AC1770
Sound Pressure level(db)	≥ 85 at4.0KHz/5Vp-p 1/2duty Square Wave/10cm
Capacitance(pF)	15000 ± 30 % at120HZ
Rated Voltage(V)	1 ~ 25
Operating Temp(°C)	-20 ~ +70
Storage Temp(°C)	-30 ~ +80
Weight(g)	2
Weight(g)	2

型号: AC2208

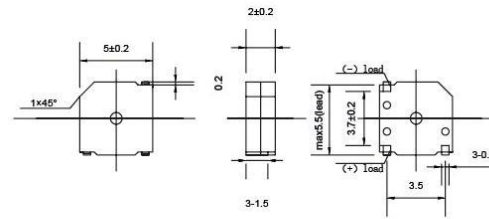


Type	AC2208
Sound Pressure level(db)	≥ 85 at 4.0KHz/5Vp-p 1/2duty Square Wave/10cm
Capacitance(pF)	25000 ± 30 % at 120HZ
Rated Voltage(V)	1 ~ 25
Operating Temp(°C)	-20 ~ +70
Storage Temp(°C)	-30 ~ +80
Weight(g)	2
Weight(g)	2



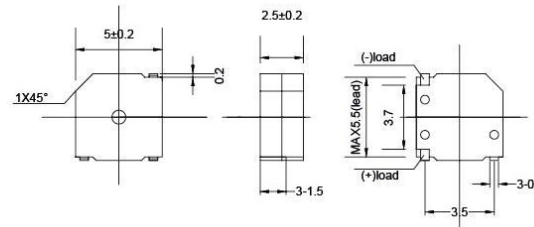
## SMD 贴片式系列

型号: CL5020A



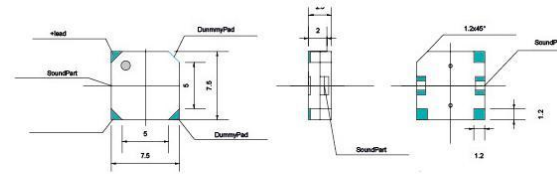
Type	CL5020A
Rated Voltage(V)	3
Voltage Range(V)	2 ~ 4
Rated Current(mA)	≦ 90
Coil Resistance(Ω )	12 ± 2
Sound Output(db)	≧ 75
Resonant Freq(Hz)	4000
Operating Temp(°C )	-20 ~ +70
Storage Temp(°C )	-30 ~ +85
Weight(g)	0.8

型号: CL5025A



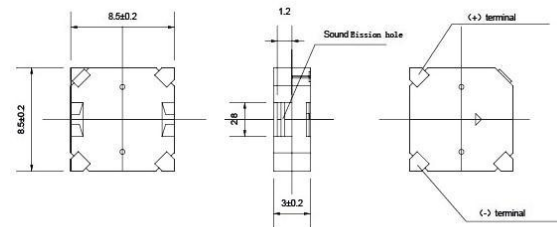
Type	CL5025A
Rated Voltage(V)	3
Voltage Range(V)	2 ~ 4
Rated Current(mA)	≦ 90
Coil Resistance(Ω )	12 ± 2
Sound Output(db)	≧ 75
Resonant Freq(Hz)	4000
Operating Temp(°C )	-20 ~ +70
Storage Temp(°C )	-30 ~ +85
Weight(g)	0.8

型号: CL7525A



Type	CL7525A
Rated Voltage(V)	3
Voltage Range(V)	2 ~ 4
Rated Current(mA)	≤ 70
Coil Resistance(Ω )	16 ± 2
Sound Output(db)	≥ 82
Resonant Freq(Hz)	2700
Operating Temp(°C )	-20 ~ +70
Storage Temp(°C )	-30 ~ +85
Weight(g)	1

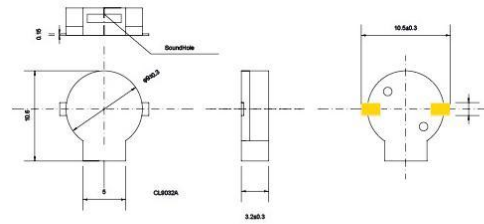
型号: CL8530A



Type	CL8530A
Rated Voltage(V)	3
Voltage Range(V)	2 ~ 4
Rated Current(mA)	≤ 70
Coil Resistance(Ω )	16 ± 2
Sound Output(db)	≥ 85
Resonant Freq(Hz)	2700
Operating Temp(°C )	-20 ~ +70
Storage Temp(°C )	-30 ~ +85
Weight(g)	1



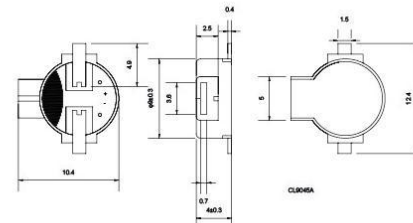
型号: CL9032A



Type	CL9032A
Rated Voltage(V)	3
Voltage Range(V)	2 ~ 4
Rated Current(mA)	≤ 70
Coil Resistance(Ω )	16 ± 2
Sound Output(db)	≥ 85
Resonant Freq(Hz)	2700
Operating Temp(°C )	-20 ~ +70
Storage Temp(°C )	-30 ~ +85
Weight(g)	1

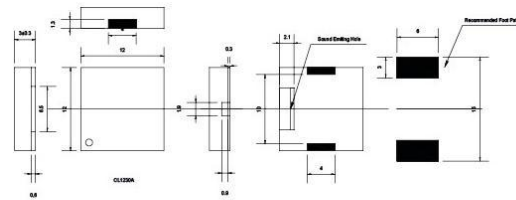
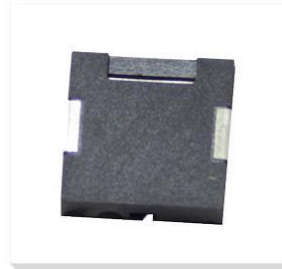


型号: CL9040



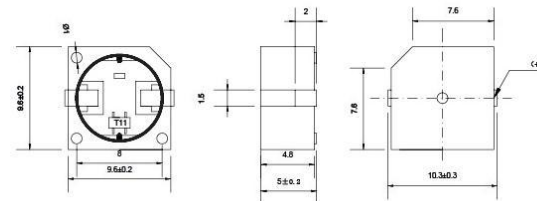
Type	CL9040
Rated Voltage(V)	3
Voltage Range(V)	2 ~ 4
Rated Current(mA)	≤ 70
Coil Resistance(Ω )	16 ± 2
Sound Output(db)	≥ 85
Resonant Freq(Hz)	2700
Operating Temp(°C )	-20 ~ +70
Storage Temp(°C )	-30 ~ +85
Weight(g)	1

型号: CL1230A



Type	CL1230A
Sound Pressure level(db)	≥ 80 at 4.0KHz/5Vp-p 1/2duty Square Wave/10cm
Capacitance(pF)	16000 ± 30 % at 120HZ
Rated Voltage(V)	1 ~ 20
Operating Temp(°C)	-20 ~ +70
Storage Temp(°C)	-30 ~ +80
Weight(g)	2
Storage Temp(°C)	-30 ~ +85
Weight(g)	1

型号: CL9650B



Type	CL9650B-03	CL9650B-05
Rated Voltage(V)	3	5
Voltage Range(V)	2 ~ 4	4 ~ 6
Rated Current(mA)	≤ 30	≤ 30
Sound Output(db)	≥ 85	≥ 85
Resonant Freq(Hz)	2700 ± 300	2700 ± 300
Operating Temp(°C)	-20 ~ +70	-20 ~ +70
Storage Temp(°C)	-30 ~ +80	-30 ~ +80
Weight(g)	2	2