



KKDD series

Mini Peristaltic Pump



Features

- Suitable for the transmission of viscous and non-viscous liquids
- Quick change of pump tube
- A variety of pump tube materials are available
- Gear drive, high reliability
- DC motor is with multi-stage gear transmission, reduction ratio 1:20

Applications

- Juice drink machine
- Drum cooking machine
- Hydrogen peroxide sterilizer
- Urine formed element analyzer



Code Description

KKDD-24 - B 17 L A

| | | |
|-----------------------|---------|-------------------------------------|
| Motor | KKDD-24 | 24V DC brushed motor (current 0.6A) |
| | KKDD-12 | 12V DC brushed motor (current 1.2A) |
| | KKTS-24 | 24V DC stepper motor (current 1.8A) |
| Tubing Material | B | PharMed® BPT tubing |
| | S | Silicone tubing |
| Tubing Size (ID x OD) | 40 | 4mm x 7.2mm |
| | 25 | 4.8mm x 8mm |
| | 17 | 6.4mm x 9.6mm |
| | 18 | 7.9mm x 11.1mm |
| Bracket | L | L type bracket |
| | | Blank means straight bracket |
| Pump Head | A | Single pump head |
| | B | Double pump heads |

Pump Tubing

| Code | Tubing Material | Performance | Lifetime |
|------|---------------------|---|----------|
| B | PharMed® BPT tubing | <ul style="list-style-type: none"> • Great resistant to general chemicals, acid, alkali and oxidizing agents • Compatible with virtually all commercial cleaners and sanitizers | ≥1000H |
| S | Silicone tubing | <ul style="list-style-type: none"> • Low adsorption, good temperature resistance, not easy to aging • Suitable for transporting various low-corrosive liquids | ≥200H |

Note: The above test data is measured when the pump head runs continuously and uninterrupted at a speed of about 300 rpm, and the room temperature is 20 °C pure water without pressure until the pump tube cracks. The actual service life is affected by factors such as medium, working conditions, temperature and humidity, voltage, speed, etc. The test data is for reference.

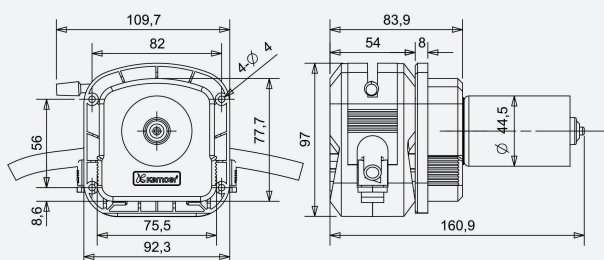
Flow Rate (unit: ml/min)

| Code | S40 | S25 | S17 | S18 | B40 | B25 | B17 |
|-------------------------|------|------|-------|-------|------|------|-------|
| KKDD-24 | ≥440 | ≥600 | ≥1000 | ≥1300 | ≥440 | ≥600 | ≥860 |
| KKDD-12 | ≥440 | ≥570 | ≥900 | ≥1240 | ≥410 | ≥560 | ≥800 |
| KKTS-24(@350RPM) | ≥420 | ≥650 | ≥1100 | ≥1600 | ≥420 | ≥650 | ≥1000 |

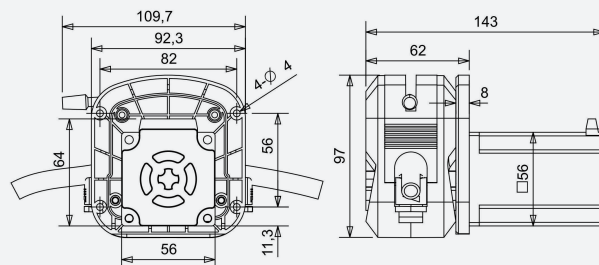
Note: The above flow parameters are measured at 20°C room temperature and standard atmospheric pressure. Actually, depending on the medium, the outlet pressure is different, the DC motor speed error etc, the flow will have a certain error, the measured data as a reference.

Dimensions (unit: mm)

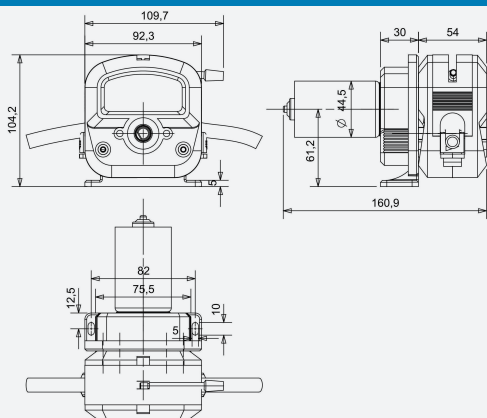
KKDD with straight bracket



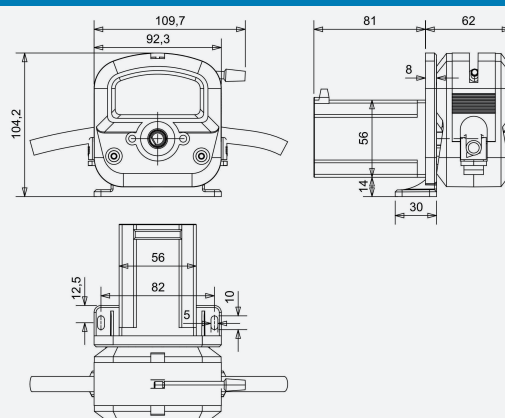
KKTS with straight bracket



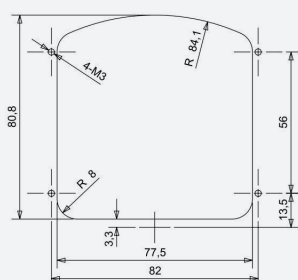
KKDD with L type bracket



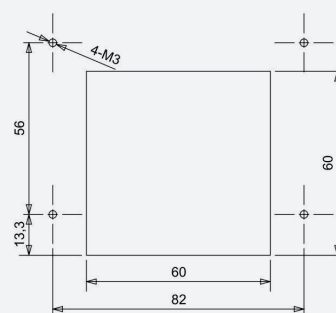
KKTS with L type bracket



KKDD straight bracket holes size

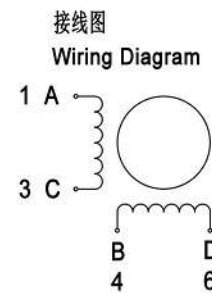
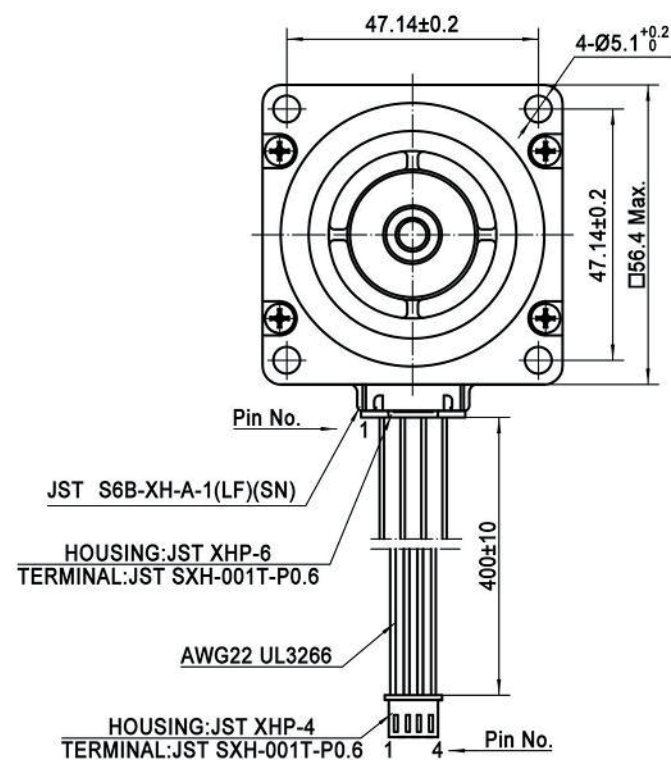


KKTS straight bracket holes size



Stepper Motor Wiring Diagram

Step angle 1.8°, two-phase four-wire, current 1.8A, wire length 400mm



连接器针位vs.引线颜色
Pin No. vs. Lead Wire Colour

| XHP-4 PIN No. | XHP-6 PIN No. | 颜色 Colour |
|------------------|------------------|-----------|
| 1 | 1 | 黑 Black |
| 2 | 3 | 绿 Green |
| 3 | 4 | 红 Red |
| 4 | 6 | 蓝 Blue |

励磁顺序vs.旋转方向
Exciting Sequence vs. Direction of Rotation

| STEP | A | B | C | D | |
|------|---|---|---|---|----|
| 1 | + | + | - | - | CW |
| 2 | - | + | + | - | |
| 3 | - | - | + | + | |
| 4 | + | - | - | + | |

从安装面看为顺时针方向
Clockwise view from mouting side